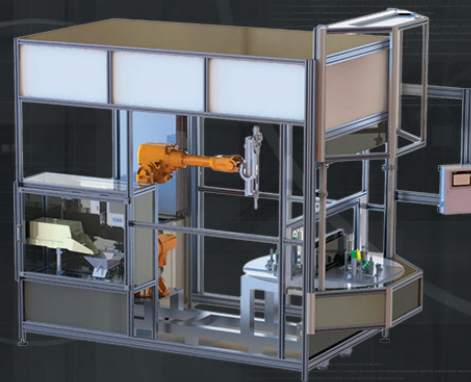




Certified according to DIN EN ISO 9001



KUK automation GmbH
Gewerbepark Grüner Weg 38
D-59269 Beckum
fon: +49 2521-299258-0
fax: +49 2521-299258-58
www.kuk-automation.de
info@kuk-automation.de



PROJECT ENGINEERING
SWITCHGEAR CONSTRUCTION
SYSTEM INSTALLATION
DEVELOPMENT OF SOFTWARE
SPECIAL MACHINE CONSTRUCTION

EVERYTHING FROM ONE SOURCE

KUK automation offers you the entire range of services from a single source, from planning to service for worldwide projects, for a perfectly adapted automation technology. We have extensive know-how in process engineering, special machine construction and robotics.

WE ARE YOUR PARTNER IN THE AUTOMATION AND SPECIAL MACHINE- CONSTRUCTION

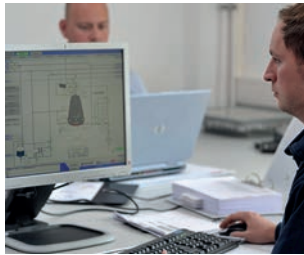
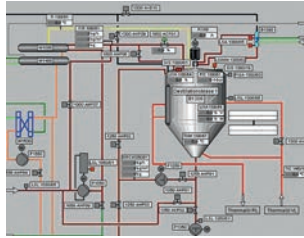
KUK automation GmbH was founded in January 1990 at the Beckum site as an electrical company. Since then we are specialized in complex tasks of the automation technology. Our team is composed of qualified engineers, technicians and specialists. From the construction to the complex machine.



PROJECT ENGINEERING SWITCHGEAR CONSTRUCTION SYSTEM INSTALLATION DEVELOPMENT OF SOFTWARE

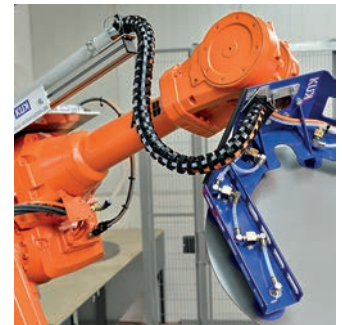
Consulting, planning, construction and dimensioning of complex plants is a focus of KUK automation. We configure electronic and pneumatic controls. The programming of the software, with which an efficient control, positioning, operation, measurability and visualization of your systems is ensured, belongs to it.

We assemble, install, monitor and supervise electrical systems worldwide.



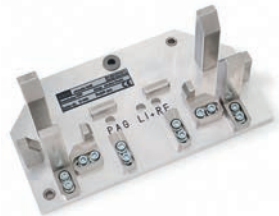
ROBOTICS

We support you throughout the entire project planning, construction, commissioning and production of robotic systems. We integrate small and large robots into your production facilities including simulation setups and process optimization. We develop complete robotic cells in the fields of handling, assembly and testing technology.

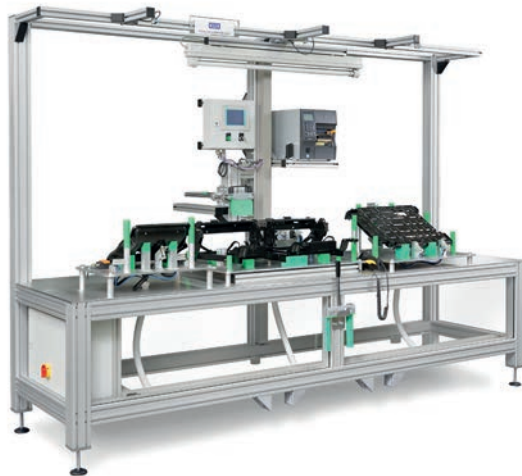


SPECIAL MACHINE CONSTRUCTION & DEVICES

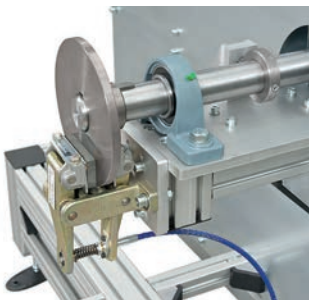
We construct and manufacture devices, workpiece carriers, gripping systems as well as autonomous robot cells and integrated robots.



workpiece carriers



Fully automatic labeling device and test station



Manual tipping device

CHECK & EVALUATE



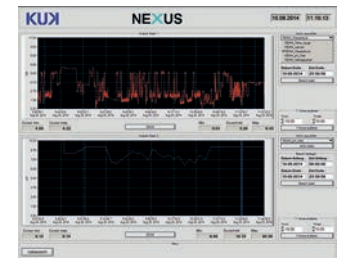
We supply the hardware for measuring, analyzing, archiving and tracing.

The EOL collects data from PLC, IPC and RFID systems as well as from encoders.

These are recorded with the corresponding cards configured by us.



NI, optical fiber, Ethernet



Long-term archiving

NEXUS

Recorded data, e.g. of the EOL are further processed with the integrated in-house software NEXUS.

Measuring, capturing, analyzing, forming and archiving are the basic functions of NEXUS.

The output logs are individually adapted to their system.